

# TRANSPORT ASSISTANCE SCHEMES

## MULTI- PURPOSE TAXI PROGRAM

The State Government has a program that gives half price on taxi fares up to a maximum discount of \$60 per trip and a total of \$2180 per year.

You need to have a special card to get the discount. To be able to get a card you must have a form filled out by the doctor.

The doctor will only fill out the form if you;

- Live in Victoria permanently and
- Have a severe and permanent disability that stops you from being able to use public transport by yourself.



Application forms are available from your doctor or the

[TAXI SERVICES COMMISSION](#)

PH: 1800 638 802

## VICTORIAN PATIENT TRANSPORT ASSISTANCE SCHEME

If you have to travel over 100 kilometres (one way) to the nearest medical and/or dental specialist, you can make a claim to get back some of the costs for **travel** and **accommodation**.

If you need someone to go with you, they can also claim some costs.

To be able to claim you must be;

- Living in a Victorian rural area
- Have referral to the nearest specialist and
- Travel 100km or more (one way) from your home to the place of the nearest specialist.

Application forms are available from the Department of Health and Human Services or your doctor's receptionist or download [HERE](#) or PH 1300 737 073

## DEPARTMENT OF VETERANS' AFFAIRS

If you have a Repatriation Health Card you may be able to claim **travel** costs for visits to the doctor and to medical appointments or be eligible for a booked car and driver.

**Accommodation** and meal allowances may be claimed if you have to stay away from home for treatment.

You need to check with the Department of Veterans' Affairs as to what is covered by each coloured card.



## DEPARTMENT OF VETERANS' AFFAIRS

Transport Bookings

PH: 1800 550 455 (regional areas)

[Travel for Treatment](#)

## **SOUTH WEST COMMUNITY TRANSPORT**

This information leaflet only  
gives you some ideas....

If you want to know more or ask questions  
about other transport matters,

Contact: Becky Morton

South West Community Transport Program

PH: (03) 5551 8461

WEB: [www.wdhs.net](http://www.wdhs.net)

EMAIL: [Rebecca.morton@wdhs.net](mailto:Rebecca.morton@wdhs.net)



This service is supported by Home and Community  
Care funding from the Victorian Department of Health  
& Human Services (DHHS)



As well as Commonwealth Home Support  
Programme (CHSP) funding from the Australian  
Government Department of Health

## **SERVICES IN THE HEYWOOD AREA**

### **PORTLAND – HAMILTON BUS**

Ph: (03) 5523 5811

Monday to Friday service; departs Heywood  
9.20am and arrives back at 2.30pm, allows over  
3 hours in Hamilton.

### **TAXIS OF PORTLAND**

Local Bookings 131 008

Out of Town Bookings (02) 6325 0004

### **HEYWOOD COMMUNITY TRANSPORT**

PH: (03) 5527 0570

Door to door assisted transport provided by  
volunteer drivers for eligible clients.

Eligibility; frail aged, disabled or isolated.

### **RED CROSS**

Phone: 0417 149 482

Transport to medical appointments, treatments and  
tests. A medical referral is required.

### **V LINE**

PH: 1800 800 007 or (03) 5523 3699

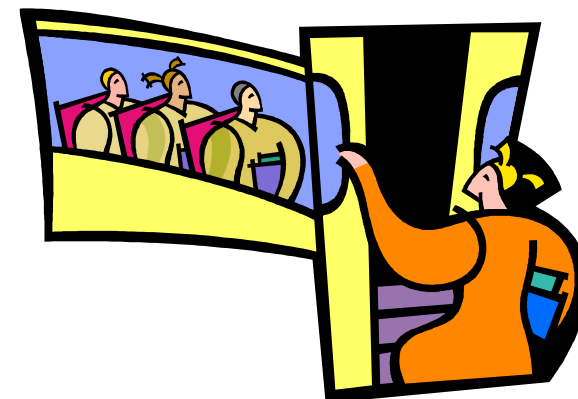
Coach and train services. It is possible to travel  
to Portland and return with 2 ½ hours in town  
morning or afternoon Monday to Friday. Longer  
stays possible.

Return travel to Warrnambool with 5 hours in  
town is possible Mon to Fri. Early morning  
service allows travel to Melbourne/Geelong and  
return in a day.

[www.vline.com](http://www.vline.com)

*(Reviewed Nov 2016)*

## **TRANSPORT OPTIONS IN HEYWOOD**



### **SOUTH WEST COMMUNITY TRANSPORT**

PH: (03) 5551 8461

WEB: [www.wdhs.net](http://www.wdhs.net)