

TRANSPORT ASSISTANCE SCHEMES

MULTI- PURPOSE TAXI PROGRAM

The State Government has a program that gives half price on taxi fares up to a maximum discount of \$60 per trip and a total of \$2180 per year.

You need to have a special card to get the discount. To be able to get a card you must have a form filled out by the doctor.

The doctor will only fill out the form if you;

- Live in Victoria permanently and
- Have a severe and permanent disability that stops you from being able to use public transport by yourself.



Application forms are available from your doctor or the

[TAXI SERVICES COMMISSION](#)

PH: 1800 638 802

VICTORIAN PATIENT TRANSPORT ASSISTANCE SCHEME

If you have to travel over 100 kilometres (one way) to the nearest medical and/or dental specialist, you can make a claim to get back some of the costs for **travel** and **accommodation**.

If you need someone to go with you, they can also claim some costs.

To be able to claim you must be;

- Living in a Victorian rural area
- Have referral to the nearest specialist and
- Travel 100km or more (one way) from your home to the place of the nearest specialist.

Application forms are available from the Department of Health and Human Services or your doctor's receptionist or download [HERE](#) or PH 1300 737 073

DEPARTMENT OF VETERANS' AFFAIRS

If you have a Repatriation Health Card you may be able to claim **travel** costs for visits to the doctor and to medical appointments or be eligible for a booked car and driver.

Accommodation and meal allowances may be claimed if you have to stay away from home for treatment.

You need to check with the Department of Veterans' Affairs as to what is covered by each coloured card.



DEPARTMENT OF VETERANS' AFFAIRS

Transport Bookings

PH: 1800 550 455 (regional areas)

[Travel for Treatment](#)

SERVICES IN THE COLERAINE AREA

CASTERTON TO HAMILTON SERVICE

PH: 5581 2144

Bus service operates school days only. Departs Coleraine at 8.10am and arrives back at 4.05pm. This is a public bus service.

COLERAINE COMMUNITY CAR

PH: (03) 5575 2001

Door to door assisted transport provided by volunteer drivers. Local and distance trips.

TAXIS OF HAMILTON

PH: (03) 5571 1200

Wheelchair accessible taxis available.

SOUTHERN GRAMPIANS COMMUNITY BUS

PH: (03) 5551 8480

Fortnightly service to Hamilton for eligible clients. Passengers must be assessed for eligibility.

V LINE

PH: 1800 800 007 or (03) 5571 1682

Coach and train services, Monday to Thursday it is possible to travel to Hamilton and Warrnambool and return Mon to Thurs, on Friday there is a late night return. See www.vline.com.au for timetable details.

(Reviewed Nov 2016)

SOUTH WEST COMMUNITY TRANSPORT

This information leaflet only gives you some ideas...

If you want to know more or ask questions about other transport matters,

Contact: Becky Morton

South West Community Transport Program

PH: (03) 5551 8461

WEB: www.wdhs.net

EMAIL: Rebecca.morton@wdhs.net

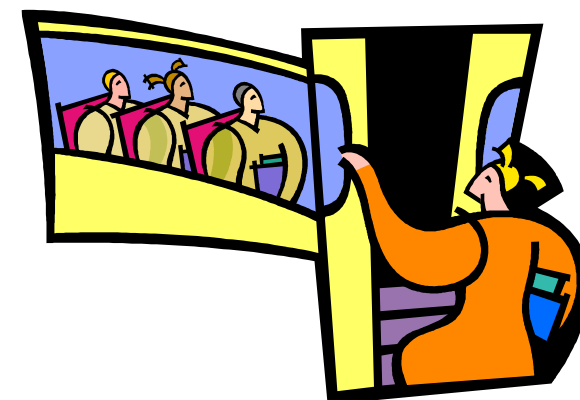


This service is supported by Home and Community Care funding from the Victorian Department of Health & Human Services (DHHS)



As well as Commonwealth Home Support Programme (CHSP) funding from the Australian Government Department of Health

TRANSPORT OPTIONS IN COLERAINE



SOUTH WEST COMMUNITY TRANSPORT

PH: (03) 5551 8461

WEB: www.wdhs.org